

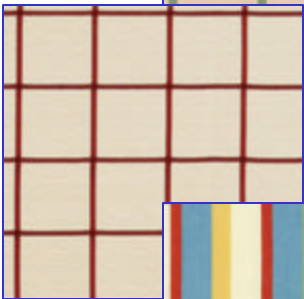
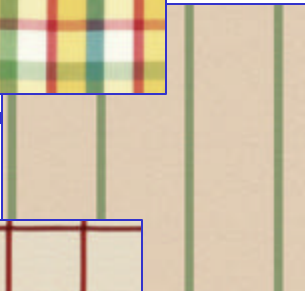
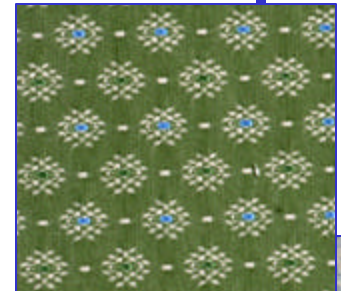
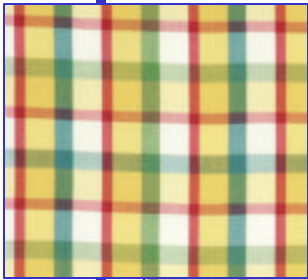


Summer 2011

Scalamandré has introduced a new Essentials Collection.

The new collection features fabrics essential to any project—plaids, checks, stripes, damasks, and small scale woven patterns. The versatile color palette ensures that there will be a fabric

to fit your style in today's fresh design aesthetic.



Designers Only
5225 W 75th Street
Prairie Village, KS
66208
Phone: 913-649-3778
Fax: 913-648-8216
www.designersonlykc.com



Joye Adamson
President



Charlice Saunders
Showroom
Manager



Liddy Miller
Showroom
Coordinator



Miriam Burch
Showroom
Assistant



Beth Starcke
Sample
Department

HICKORY CHAIR NEWS



810-01

The number one dining chair in the Midwest is the 810 Rhode Island Chippendale Chair from the James River Collection. This frame has been in the collection for many years making it a time tested chair as well as an elegantly designed chair.

The 1508-23 Hunt Chair from the Suzanne Kasler Collection is a much younger chair but, in a short time has managed to maneuver itself into the 2nd top selling spot in the Midwest. The entire Suzanne Kasler Collection has been selling at an amazing rate and looks to be the top collection for the Midwest in 2011.

See the entire Hickory Chair collection including fabric and finish selections at Designers Only or view online at www.hickorychair.com.



#1508-23

CHASE & COMPANY
DRAPERY HARDWARE

Add a little glitz and glamour to your drapery with these finials from Chase & Company. Aged brass encrusted finials with Swarovski crystals create an extra touch of style.



Looking for something more traditional? Chase & Company has a variety of styles to choose from. Check out www.chasedh.com

A Note on Credit Cards

Designers Only is happy to process credit card payments on new orders and balances due on invoices. We will continue to do so without charging a transaction fee.

Designers Only, however, will not automatically run a credit card without prior authorization. If you receive an invoice showing a total due it is your responsibility to contact Designers Only to have that amount processed before the due date has passed.



To save time, request a credit card pre-authorization form to keep on file.

Designers Only will apply all open invoices to the card on file. Charges will be applied the day the invoice is due.



JONATHAN CHARLES
FINE FURNITURE

Welcome summer with romantic pieces reminiscent of a charming coastal cottage. Jonathan Charles has introduced a collection of chairs, tables, chests, and accessory items available in two new finishes.

Bring your coastal dreams to the Midwest with the new Cottage Living Collection!



RALPH LAUREN *Home*

California Romantic— With the romance of travel as inspiration, this timeless fabric collection features embroidered gossamer sheers, textural weaves and exotic patterns evoking the air of chic, faraway glamour.

Maritime Outdoor—Influenced by the elegant luxury of seaside living these richly woven outdoor fabrics feature lavish patterns, rustic weaves, charming nautical designs, and exquisitely crafted embroidery.

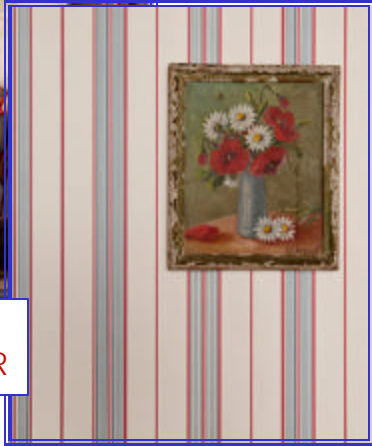


This collection possesses the beauty and exceptional quality that Ralph Lauren has come to represent.

WILLIAM YEOWARD POLPERRO COLLECTION



ST. IVES
WALLPAPER



ST. MAWES
FABRIC



The Aranjasa Collection, released last year, received such a positive reaction that William Yeoward* created three additional collections to compliment these versatile fabrics. Rustic stripes make up the majority of the woven collections with accents of patchwork and small prints. Drawing inspiration from 19th Century European and British sources, the popular hues of blue and red are accompanied by greens, golds, and neutrals. The wallpaper collection features striped patterns and competitive pricing making it a great resource for any project. View the new books at Designers Only!

*William Yeoward is distributed by Osborne & Little.



ARANJASA
FABRIC



POLPERRO
FABRIC



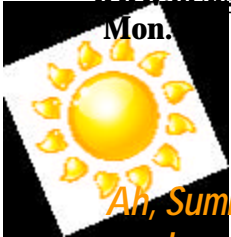


5225 W. 75th Street
Prairie Village, KS 66208

913-649-3778

www.designersonlykc.com

Mon. 9am—4:30pm



*Ah, Summer—what power
you have to make us suffer
and like it. ~Russell Baker*

RETURN SERVICE REQUESTED

New Discount

**Designers Only
is happy to announce
increased discounts
on multiple
furniture lines!**

*See enclosed list of
product lines for updates.*

**Designers Only
will be closed
Monday, July 4th
in observance of
Independence Day.**

**We will reopen
Tuesday, July 5th
at 9:00 am.**

**Have a safe and
happy holiday!**