



March 2010

Scalamandré

From luxurious silks to retro inspired indoor-outdoor prints, Scalamandré continues to inspire designers coast to coast with must have fabrics. The newest introductions to the line are featured here. Contact Designers Only for pricing, stock availability, and memo samples.



New Outdoor Fabrics (OD)



Designers Only
5225 W 75th Street
Prairie Village, KS
66208
Phone: 913-649-3778
Fax: 913-648-8216
www.designersonlykc.com



Joye Adamson
President



Charlice Saunders
Showroom
Manager



Jill Graves
Executive
Assistant



Liddy Miller
Showroom
Coordinator



Miriam Burch
Showroom
Assistant



Beth Starcke
Sample
Department



Julie Schroeder
Sample
Department



Old Biscayne Designs



Owners
Gretchen
& Nick
Gabrielli

Rosalie Iron Bed
on display at
Stoney Broke, Ltd.



Thank you to those who were able to attend our Old Biscayne event on Thursday, February 25th. We had a wonderful time with owner Gretchen Gabrielli. Gretchen, along with her husband Nick, started Old Biscayne Designs in 1990. Welding their cultures, his of Argentine aristocratic elegance and hers of Southern simplicity and charm, they formed a company that handcrafts furniture to each customer's specifications. Striving to be a premier custom company they are able to offer customizing options for minimal up-charges. Case goods, beds, dining furniture, and drapery hardware are available in metal or wood in a multitude of finishes. Custom quotes can generally be delivered within 48 hrs and include a CAD drawing. Contact the furniture department today to get a quote started. The entire catalog and finish samples are available at Designers Only.



Chelsea Bed in
Vintage Grey
on display at
Designers Only



At Designers Only: Eloise End Table in Dark Walnut and Mullaney Chest in Vintage Green

Furniture by *Scalamandré*

Enjoy a special discount on Scalamandré furniture when upholstered with Scalamandré fabric. The new 10/10 program gives designers a 10% discount on the frame as well as 10% off the fabric. View the complete furniture collection and fabrics online at www.scalamandre.com.

Lead times are approximately 8 weeks from receipt of fabric. All Scalamandré furniture is hand-crafted in the United States.

*Offer does not include Colony fabrics.



Scalamandré

Peter Julian, Scalamandré representative for Kansas and Missouri, will be returning to Designers Only's showroom April 9th—13th. He will be available in the showroom to present the newest releases, answer questions, and to help find product. Please stop in to visit with Peter and see the new collection!

Twiggy



HOULÈS Trimmings

? Don't be fooled, that's not the latest jewelry being worn on the red carpet, it's a drapery tieback from Houlès! The Twiggy collection is a fun way to add unique flair to your design.

Fanciful tassel fringes, graphic braids and artful tiebacks are available in 15 fantastic colors.

Needing a more traditional look?

Check out the newest Houlès Collection, Valmont. ?

Valmont is an elegant collection that is the perfect "icing" to any room. 17 color options in 14 styles make it easy to find the perfect trim for any application.

Most Houlès trims are in stock and arrive in 3 –5 business days.

Valmont



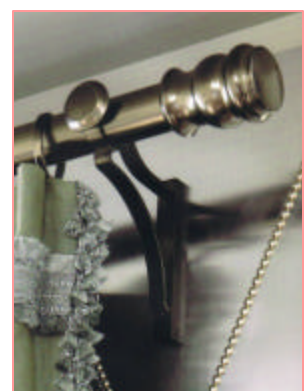
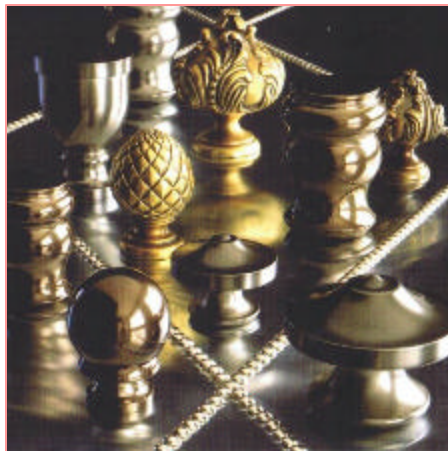
HOULÈS Drapery Hardware

Houlès has released a new collection of drapery hardware.

MÉDICIS is comprised of 6 classic, elegant and timeless hardware designs. All styles are available in 3 metallic finishes:

Brass, Bronze, and Antique Silver, or 3 painted finishes: Linen, Chocolate, and Grey.

Houlès drapery hardware is reasonably priced for the style and quality received. Most hardware is in stock and arrives in 3-5 business days. In addition to drapery hardware, Houlès also offers a wide selection of tie-backs, drapery wands, stair rods, and decorative accessories.



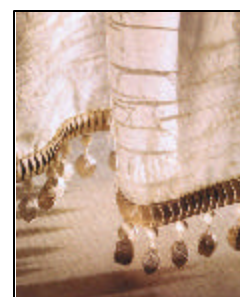
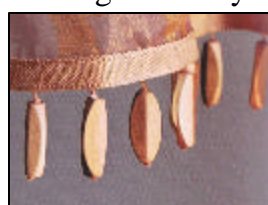
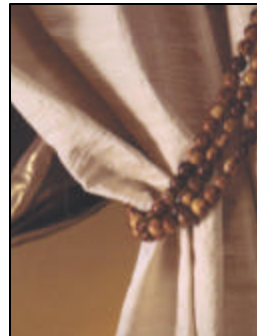


SAMUEL & SONS

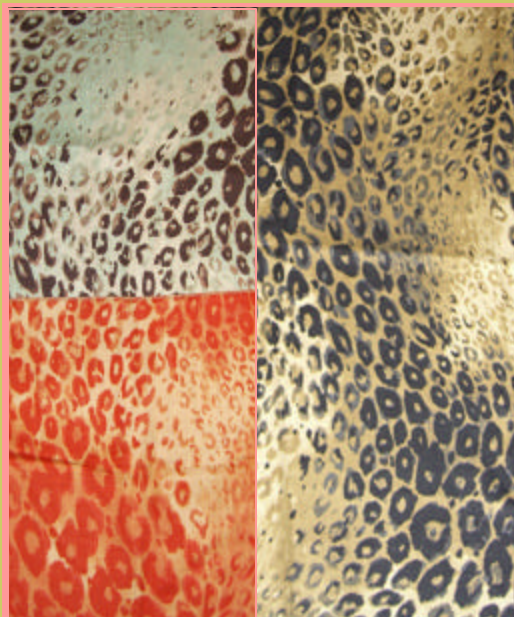
PASSEMENTERIE



Oasis, the nature inspired collection designed by Lori Weitzner, features exotic elements like sibukaw pods, abaca fiber, and banana bark. Beaded tiebacks, hand painted and wire wrapped wood fringes, macramé jute braids, hand embroidered and pleated linen borders make up this unique collection. The Oasis collection consists of two directions: Oasis Glamour for the dressier look; and Oasis Natural for a soothing and sophisticated natural feel. Weitzner's penchant for dimensional texture and culturally based design can be seen throughout the collection. See the full collection and ask for samples at Designers Only.



Brunschwig & Fils



Ready for fresh new ideas this spring? Sue Cabay, Brunschwig & Fils representative, will be at Designers Only in April to show new fabrics along with classic Brunschwig & Fils favorites.

Private showings will be held
on Wednesday April 7th
& Thursday April 8th
from 9:00am-4:00pm

Call to set up an appointment now, as times will fill quickly. 913-649-3778



5225 W. 75th Street
Prairie Village, KS 66208

913-649-3778

www.designersonlykc.com

M-F 9:00am—4:30pm

RETURN SERVICE REQUESTED

**St. Patrick's Day is an enchanted time—
a day to begin transforming winter's
dreams into summer's magic.**

-Adrienne Cook



CLARENCE HOUSE



Swing into Spring!

Ray Jones will be introducing
Clarence House's 2010
Spring Collection the second
week of March. Showings will
be done hourly Monday-Friday.

March 8th—12th, 2010
9AM —4PM

Make an appointment today
with Liddy at 913-649-3778 or
customerservice@designersonlykc.com