



# February 2011

## CLARENCE HOUSE

Clarence House's Spring 2011 collection is another wonderful grouping of unique and useable fabrics. In addition to their great selection of solids and stripes, more exciting new prints have been released as well as adding new colorways to established patterns. 3 patterns have been added to the outdoor collection including the stripe shown below.

A number of sheers are included in the collection, from some delicately woven on an antique Nottingham lace loom, to other more substantial leno weaves.

Crewel, grosspoint, and tone-on-tone flat weaves were added too.

Sign up today for a private showing with our new Clarence House rep Jackie Hall.

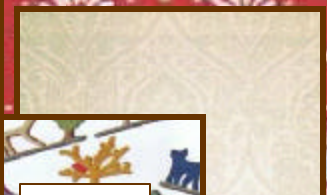
Showings will be at Designers Only Thursday & Friday February 10th & 11th from 9-4.



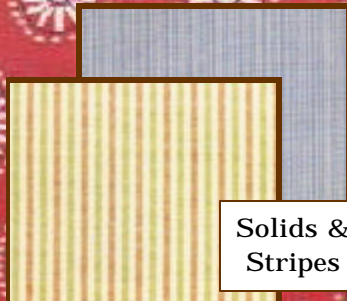
Prints



Sheers



Wovens



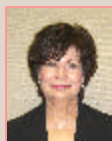
Solids & Stripes



Outdoor



**Designers Only**  
5225 W 75th Street  
Prairie Village, KS  
66208  
Phone: 913-649-3778  
Fax: 913-648-8216  
[www.designersonlykc.com](http://www.designersonlykc.com)



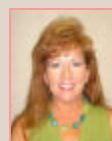
Joye Adamson  
President



Charlice Saunders  
Showroom  
Manager



Liddy Miller  
Showroom  
Coordinator



Miriam Burch  
Showroom  
Assistant



Beth Starcke  
Sample  
Department



Julie Schroeder  
Sample  
Department

Special Pricing on Niermann Weeks lighting

Now through March 31st select any lighting product and there is no upcharge for premium finishes. All items will be priced at the lowest finish option pricing available. Items ordered in a standard finish will receive 5% off during this time. Quick ship items are included in this promotion, however, custom orders are exempt. Stop by the showroom or [www.niermannweeks.com](http://www.niermannweeks.com) to view the catalog.



10-00408-3408



10-00409-3809



11-00692-1202



10-00589-1103



11-00903-0801

Deliveries and Receiving



Recently there have been some questions raised about deliveries and receiving that we would like to address.

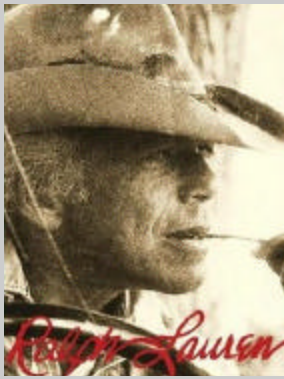
**Furniture Orders:** All furniture orders must be sent to a furniture receiving company. These “receivers” have docks for the trucks and the man power to unload the product. Truck drivers are not required to unload. The “receiver” will also unpack, assemble, and inspect items as well as notify us regarding any freight claims that might occur. When placing a furniture order please provide a furniture receiver as the “ship to” address. The size of a lighting fixture determines whether it can be shipped to a residence or a receiver.

**Fabric, Wallpaper, & Trim Orders:** These orders may be shipped to a residential address. However, the designer is responsible for inspecting the goods for accuracy and damage. Any claims must be resolved within a few days of receipt of the product.

Due to limited space at the showroom Designers Only is not able to accept many deliveries. However, if there is no other option we will be glad to accept delivery for a small receiving fee. Deliveries made to Designers Only must be picked up in a timely manner or a storage fee may be applied.

RALPH LAUREN and CLARENCE HOUSE have released their Spring 2011 collections.

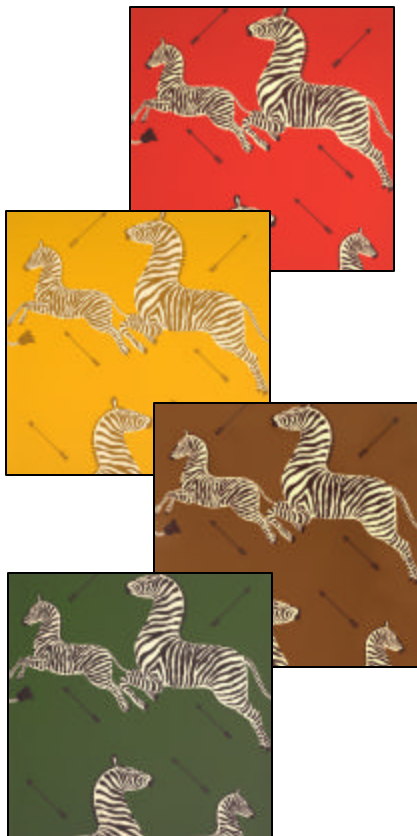
Our new rep, Jackie Hall, will be at Designers Only showing Ralph Lauren's California Romantic and English Riding Velvet collections. She will also showcase Clarence House's Spring 2011 Collection.



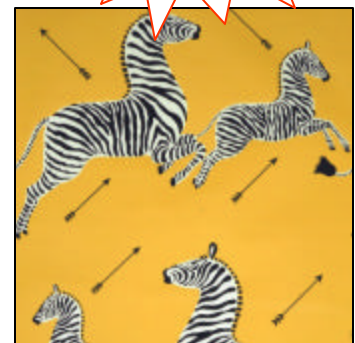
Thursday, February 10th  
& Friday, February 11th  
from 9am-4pm.



Make your appointment today with Liddy at [customerservice@designersonlykc.com](mailto:customerservice@designersonlykc.com) or 913-649-3778



Scalamandré just released two new colorways of the popular Zebras wallpaper pattern! Along with the original four colors, two new variations have been added: black with tan stripes and yellow with black stripes. If the color you desire is still not available, you may place a custom order and pick the color scheme of your choice.



## Celebrity Sightings :

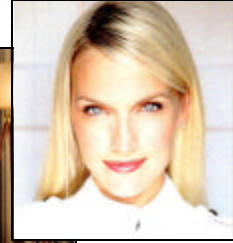
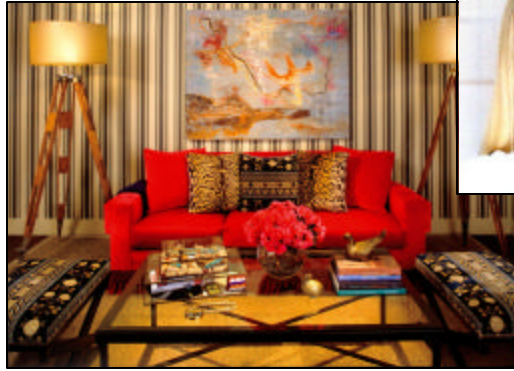
Monica Pedersen of HGTV's Dream Home Giveaway 2011 was in town this winter and made an appearance at Designers Only.

Monica shared how she got started in the field, and how learning her father's handyman and mother's sewing skills really helped. Last year Monica designed the sitting room at the

Chicago Mart Dream Home (pictured at right). Monica also appears on HGTV's Designed to Sell and Bang For Your Buck,

showing viewers how to add value to their home while working within a set budget.

Watch Monica on the live giveaway of the dream home March 12th, 2011.



JONATHAN CHARLES  
FINE FURNITURE

492206



493203



492038

Jonathan Charles has expanded their selection of mirrors.

New sizes, shapes, and finishes are now available. Tortoise, gilded, stained, or painted finishes are available in rectangle, round, oval, octagon, and more shapes.

Mirrors in stock can ship in as little as two weeks.

Go to:

[www.jonathancharlesfurniture.com](http://www.jonathancharlesfurniture.com) to see more mirrors and also the Jonathan Charles furniture selection.

492155



492622



494073



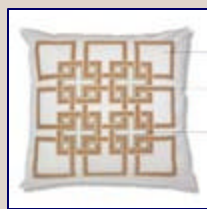
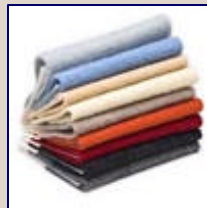


5225 W. 75th Street  
Prairie Village, KS 66208  
913-649-3778  
www.designersonlykc.com  
Mon.-Fri. 9am—4:30pm

RETURN SERVICE REQUESTED



Wishing you a  
Valentines Day  
filled with love  
and good friends, from the  
ladies at Designers Only.



## Holland & Sherry

Chris Snyder of Holland & Sherry  
Chicago will be at Designers Only  
offering private showings of the  
New Spring Collection on  
Tuesday, March 8th from 9am-4pm.  
Holland & Sherry has been a maker  
of fine luxurious fabrics from top  
quality fibers for over 170 years. Call  
or email today to reserve  
your time.

913-649-3778

customerservice@designersonlykc.com

